



Diagnostic insight close at hand

AMX™ 240

AMX 240 is a commercial configuration of the Optima XR240amx

gehealthcare.com





Every patient

AMX 240 is a commercial configuration of the Optima XR240amx

becomes the point of care

Some of healthcare's most critical points of care occur in complex environments. Like in the ER, where immediacy is essential. Or in the NICU, where temperature is carefully controlled. Situations like these make it difficult to get the important diagnostic insight you need from a fixed radiography room.

We designed our digital mobile X-ray system, AMX 240, with these complex care areas in mind. It combines the power of Helix advanced image processing with high-resolution, 100 micron FlashPad HD digital detectors to enable you to see fine details with exceptional contrast. And because mobility is just as important as the images it creates, it was designed for maneuverability with dependable power management technology in both the system and the detectors. It's a mobile X-ray system you can rely on to make each patient the point of care.



A photograph of two surgeons in an operating room. They are wearing blue scrubs, masks, and hairnets. They are looking at a large monitor that displays a chest X-ray. The monitor has a software interface with various controls and labels like 'L', 'R', 'A', and 'D'. The scene is lit with bright surgical lights.

Technology that adapts

AMX 240 is a commercial configuration of the Optima XR240amx



FlashPad HD detectors available in 10 in x 12 in and 14 in x 17 in configurations



Available secondary monitor provides clear viewing and full functionality in critical care environments

to the environment you need it in

Mobile technology has to be adaptable to the variety of environments in which it's used. In a fast-paced environment like the OR, you need all of your technology in a surgical setting to work harmoniously together.

AMX 240 includes two different detector sizes. They are thin, light and can be used with your surgical table to quickly get the image you need. In addition, QuickConnect adaptive wireless technology enables automatic channel switching to improve image transfer and to avoid wireless interference with other surgical equipment on the hospital network.



5 lp/mm resolution



QuickConnect adaptive wireless connectivity

A photograph of a hospital room. In the foreground, a medical professional in a white lab coat and a patient in a blue shirt and green drape are looking at a chest X-ray on a monitor. The monitor is part of a GE Optima XR240amx mobile X-ray unit. In the background, another patient is lying in a hospital bed, and another monitor is visible on the wall. The text "When every second counts" is overlaid in large white font across the center of the image.

When every second counts

AMX 240 is a commercial configuration of the Optima XR240amx

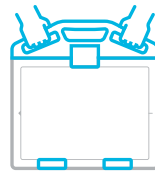
the first image counts the most

The ER can be a very busy, chaotic place. You need to respond quickly and effectively and you need the diagnostic tools you rely on to do the same.

AMX 240 has a small footprint that allows it to fit seamlessly into the background of your busy ER. And with QuickCharge in-bin charging, the FlashPad HD detector batteries charge on the go, in “standby” mode or when the system is powered on and plugged in. This gives you peace of mind knowing that it will be ready when you need it.



Maneuverable positioning



QuickShare in-bin registration and pairing enables easy detector sharing



Keep your detector charged with QuickCharge in-bin detector





Seamless support

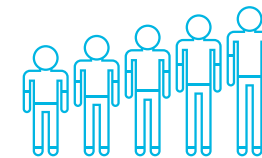
AMX 240 is a commercial configuration of the Optima XR240amx

to make each journey as safe as possible

Healthy growth and development is a journey for all babies, especially for those needing NICU care. These early arrivals require extra protection from the world around them as they continue to grow and heal.



AMX 240 provides seamless support for carefully controlled neonatal environments. Its small tube design can easily be positioned and its nimble, quiet (50-60 dBa) operation helps to minimize disruptions.



Pediatric protocols can be adjusted to five different patient sizes



50-60 dBa Normal conversation
110-120 dBa Loud car horn

Quiet 50 to 60 dBa operation helps to minimize disruptions



Low dose for your most sensitive patients



QuickEnhance one-touch reprocessing for line visualization

An agile system



AMX 240 is a commercial configuration of the Optima XR240amx



for swift rounds

Hospital corridors can be crowded places, full of people and equipment. Whether you are traveling from one department to another or one room to another, you need equipment that matches your pace.

Designed with hospital rounds in mind, AMX 240 is easy to maneuver. Its small footprint allows you to fit in the tightest spaces. And automatic charging algorithms allow it to recharge at any charge level and at any time, even during exposures. This ensures the long battery life you need to make it through your entire round without interruptions.



See everything you need



Hip, anterior-posterior, medium adult



Hand, posterior-anterior,
medium adult



Chest, anterior-posterior, small adult



Foot, anterior-posterior, medium adult

at important points of care



Abdomen, anterior-posterior, large pediatric



Chest, anterior-posterior, small pediatric



Chest, anterior-posterior, small pediatric with QuickEnhance



Chest, anterior-posterior, medium adult



Chest, anterior-posterior, medium adult with QuickEnhance

Mobile X-ray

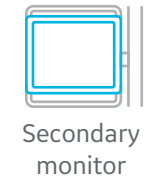


AMX 240 is a commercial configuration of the Optima XR240amx

that lives up to the AMX name

When we first introduced our AMX mobile X-ray systems, they quickly made a name for themselves as hardworking, long-lasting and reliable systems.

This latest system improves on that reliability with additional features and services. InSite™ gives you on-the-spot access to our service professionals with predictive service support and remote application assistance. Optional web-based solutions, such as Edison Applied Intelligence featuring the X-ray Quality Application, make it easier to manage your X-ray investment. We also made it easier to upgrade your current system to the latest technology with our in-field upgrade program. Together, these features and services make AMX 240 a reliable, long-lasting investment that lives up to the AMX name.





GE Healthcare is a leading global medical technology and digital solutions innovator, GE Healthcare enables clinicians to make faster, more informed decisions through intelligent devices, data analytics, applications and services, supported by its Edison intelligence platform. With over 100 years of healthcare industry experience and around 50,000 employees globally, the company operates at the center of an ecosystem working toward precision health, digitizing healthcare, helping drive productivity and improve outcomes for patients, providers, health systems and researchers around the world. Follow us on Facebook, LinkedIn, Twitter and Insights, or visit our website www.gehealthcare.com for more information.

©2020 General Electric Company - All rights reserved.

AMX 240 is a commercial configuration of the Optima XR240amx

GE Healthcare reserves the right to make changes in specifications and features shown herein, or discontinue the product described at any time without notice or obligation. Contact your GE Healthcare representative for the most current information. GE, the GE Monogram, AMX and InSite are trademarks of General Electric Company. GE Healthcare, a division of General Electric Company. GE Medical Systems, Inc., doing business as GE Healthcare.

May 2020
JB79352XX