



OEC Elite Touch control panel

Intuitive Control for OEC Elite premium C-arms





Streamline Imaging Workflow

During surgery, capturing exceptional images can be physically demanding - from moving the C-arm to imaging and recalling images. The OEC Elite Touch control panel is designed to bring more control with fewer disruptive steps.

Designed for intuitive operator workflow

The OEC Elite Touch control panel is located right where you need it, on top of the C-arm base. The OEC Touch control panel combines standard and advanced imaging functionality, bringing more operator control during procedures.

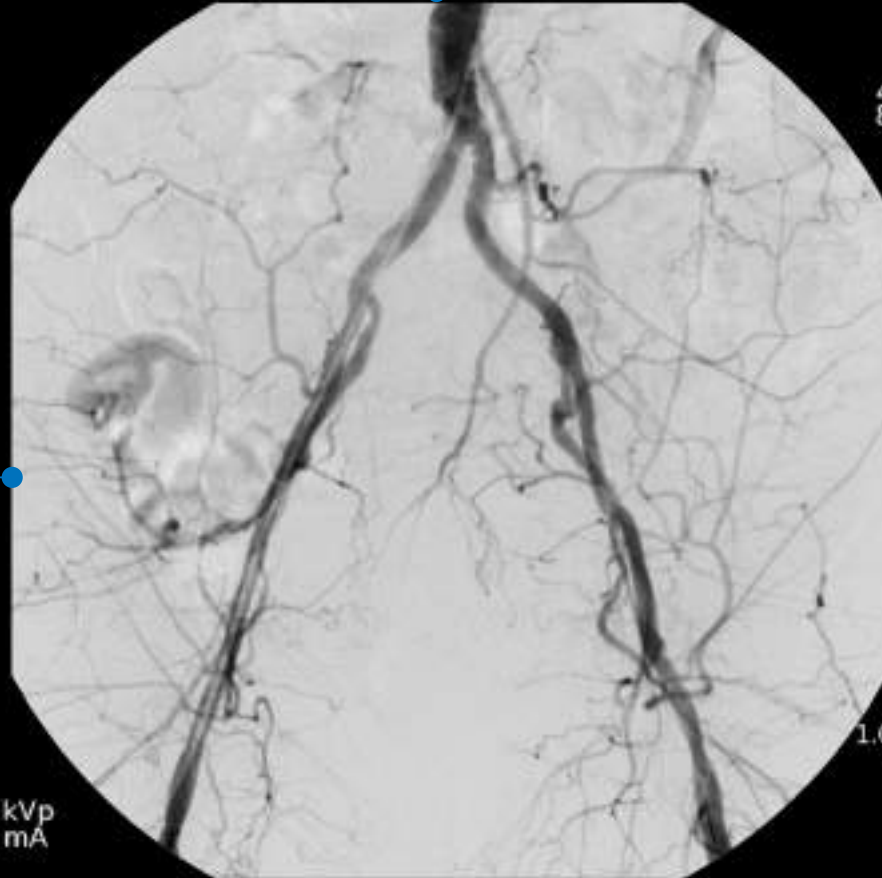
Synchronize surgical team communication with an interactive live image that mirrors the surgeon's view on the 32" 4K display. Disruptions such as stepping over to the workstation and blocking the surgeon's view are eliminated with features now available on the OEC Touch control panel for imaging requests during a procedure.

Experience surgical imaging confidence with the OEC Touch control panel - designed for intuitive, fluid imaging controls during the moments that matter.

IMAGE ROTATE

IMAGE DIRECTORY

MOTORIZED DRIVE



LIVE ZOOM

46
84



General



Spine



PROFILE



General HD



Vascular



MODE PAIRS



Orthopedic



Bolus Chase



9900



Cardiac



VASCULAR CINE

43 kVp

0.47 mA

00:01 mm:ss

0.012 Gy/cm²

0.00 mly/min

0.027 mls

0%

0%



72 kVp
18 mA

214D



IMAGING TOOLS

DIGITAL PEN

IMAGE DICOM

LASER AIMER

CONTROL FUNCTIONS

Intuitive Operator Control

Access advanced imaging features quickly

With more advanced tools available, areas of interest can quickly be emphasized during a procedure. From the OEC Touch control panel quickly Live Zoom on areas of interest or outline a device with Digital Pen. During vascular procedures change mode pairs and set up subtraction and roadmap without moving to the workstation.



React instantly during a procedure

Effortlessly adjust settings as needed during surgery. Fine tune an image to a surgeon's preference by switching between preset imaging profiles or individually adjusting brightness and contrast. Turn the laser aimer on or off as needed for positioning while maintaining the sterile field. Continue to access standard features like rotate or save from the OEC Touch.



Position simply for versatile viewing

Position in a way that works no matter where you are standing. The OEC Touch rotates between portrait or landscape, tilts up and down and swivels 270°. View large 7.1" live images easily on this high resolution display from either side or the rear of the C-arm.

Recognizable and Intuitive

The OEC Touch control panel features recognizable icons and controls from prior OEC premium control panels. Moving through the control panel is simple with functions and settings available with just one click for quick access.



Availability of select models, configurations, and options varies by country.
Please contact your local sales representative.

Imagination at work

©2019 General Electric Company - All rights reserved.

General Electric Company reserves the right to make changes in specifications and features shown herein, or discontinue the product described at any time without notice or obligation. Contact your GE Representative for the most current information. GE, GE Monogram, OEC, and OEC Elite are trademarks of General Electric Company. GE OEC Medical Systems, Inc., doing business as GE Healthcare.

JB68159XX

